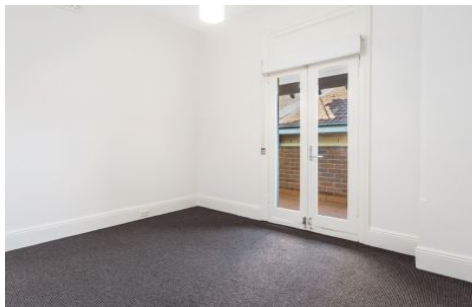


CROLL



1/801 Military Road Mosman NSW

2  1 

ENTER PROPERTY FROM REAR LANEWAY

Type : Apartment

View : <https://www.croll.com.au/8561515>

Fabulously located apartment only steps to Mosman Village and transport and moments to Balmoral & Chinaman's Beach. Every convenience is at your fingertips. Newly updated with fresh paint and blinds throughout, this light and bright apartment presents charming period features, including high ceilings and leadlight windows. Perfectly positioned, this home is within walking distance to local schools, shops, and transport, allowing you to enjoy the vibrant Mosman lifestyle.



Lucia Romanos
02 9908 7777

- Convenient location close to all amenities
- Contemporary, neutral palette t/out
- Open, undercover front balcony

[For full version visit the website](https://www.croll.com.au)

<https://www.croll.com.au>