

# CROLL



22/143 Kurraba Road Kurraba Point NSW

1  1  1 

Offering postcard views of Sydney Harbour, Neutral Harbour and Shell Cove across Bradley's Head to Vaucluse, this apartment is perfectly located to enjoy a true harbourside lifestyle. Delight in this picturesque harbourside position with tranquil, leafy surrounds. Be the first to enjoy recent updates, including new paint, carpet and lighting throughout, presenting a fresh and modern apartment brimming with natural light. Offering scope to add your personal style and further realise the potential of this stunning abode. Located in the highly desirable Kurraba Point enclave, moments to the water's edge and only moments to local walking paths and Maccallum Seawater Pool. Skip across the harbour to the city and within easy access to Neutral Bay and Kirribilli villages. This is a well-maintained block with established garden

**Type** : Apartment

**View** : <https://www.croll.com.au/8388229>



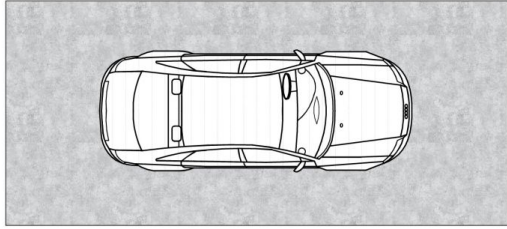
**Lucia Romanos**  
02 9908 7777



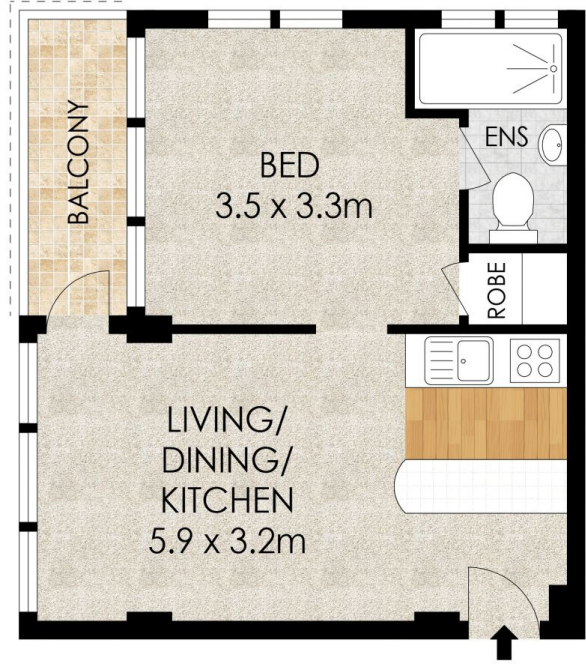
**Andrew Croll**  
02 9908 7777

[For full version visit the website](https://www.croll.com.au)

<https://www.croll.com.au>



SECURE CAR SPACE  
5.6 x 2.5m



LEVEL TWO



PLANS SHOWN ONLY INDICATIVE OF LAYOUT. DIMENSIONS ARE APPROXIMATE.

**22/143 Kurraba Road, Kurraba Point**