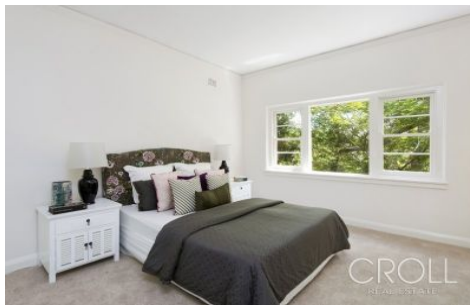


CROLL



118 Milson Road CREMORNE POINT NSW

24 🏠 12 🚗 3 🚗

One of Sydney's last reserve waterfront blocks

Strata subdivision approved? this block of twelve art deco era apartments presents the perfect opportunity for investors and developers. The Taleeson apartments each offer well-maintained interiors, a generous two bedroom layout and an idyllic outlook, with views through the treetops to the tranquil waters of Shell Cove. Commanding an exclusive position, the property offers direct access to waterfront parkland, with a scenic foreshore walking trail leading to McCallum Pool and the Cremorne Point Ferry.

Each apartment with two double bedrooms, bathroom/laundry
Large eat-in kitchen, elegant living opening to covered

Type : Block of Units

View : <https://www.croll.com.au/8374096>



Andrew Croll
02 9908 7777

[For full version visit the website](https://www.croll.com.au)

<https://www.croll.com.au>



LEVEL 4



LEVEL 3



LEVEL 2

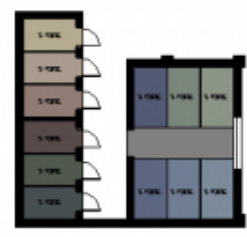


LEVEL 1

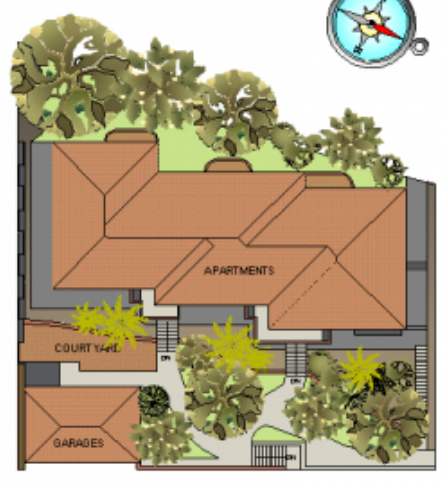


KEY:

- APARTMENT 1
- APARTMENT 2
- APARTMENT 3
- APARTMENT 4
- APARTMENT 5
- APARTMENT 6
- APARTMENT 7
- APARTMENT 8
- APARTMENT 9
- APARTMENT 10
- APARTMENT 11
- APARTMENT 12
- COMMON AREAS



GARAGES



SITE PLAN
(NOT TO SCALE)

118 MILSON ROAD

CREMORNE POINT

PLANS ARE INDICATIVE OF LAYOUT AND SHOULD NOT BE TAKEN AS AN EXACT REPRESENTATION OF THE PROPERTY. DIMENSIONS AND ASPECT ARE APPROXIMATE.